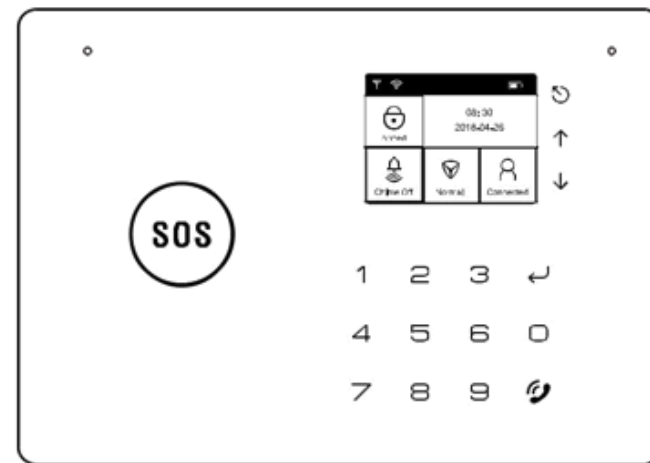


GSM & WiFi Alarm System User Manual



Android / IOS

Scan QR code here download and install APP



Preface

Dear Clients,

Thank you for using our GSM Alarm System. This Smart Home Burglar Alarm System Will Guard the security of your family and home property within 24 hours in whole 365 days.

This wireless security alarm system adopts the international advanced digital security technology by strong reliability and low false alarm rate. Multiple Alarm functions for various dangerous situations: **Fire, Burglary, Gas leakage, Breaking-in Robbery, and disease emergency, etc.** The alarm system works to wired detector and wireless detector, the whole set is widely used for House, Store, Accounting Office, Villa, and Residence Community...

Before Using our alarm system, please carefully read this user manual.
Also please keep it well for any time reference.

Notice:

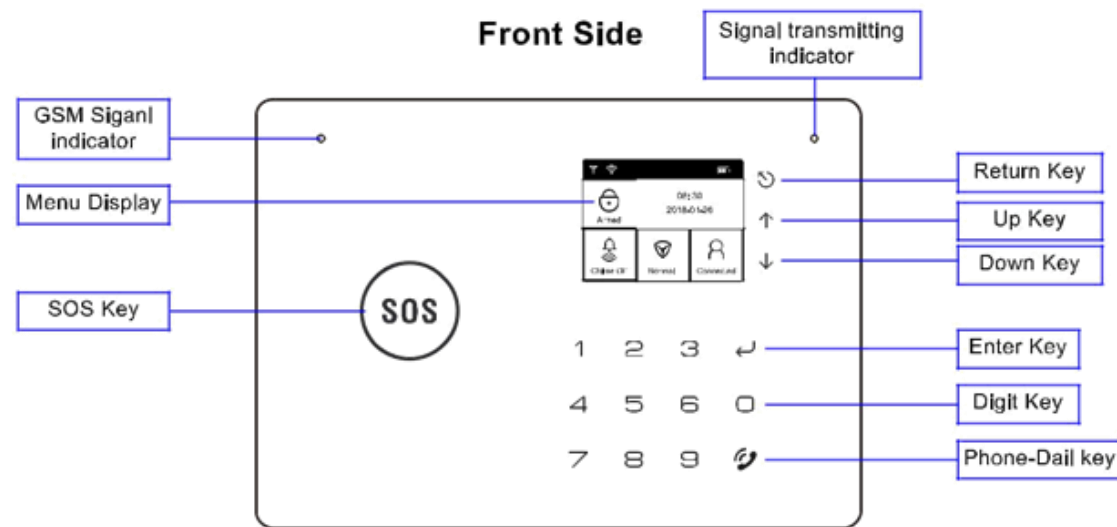
Security Alarm is to reduce the rate of unexpected breaking-in, not 100% accuracy. We suggest you use the alarm system properly, and test the product and check its performance in regular time. Which can remove the technical problem in time. We hope all client to be alert in the daily life, and keep a strong safety mind.

Catalogue

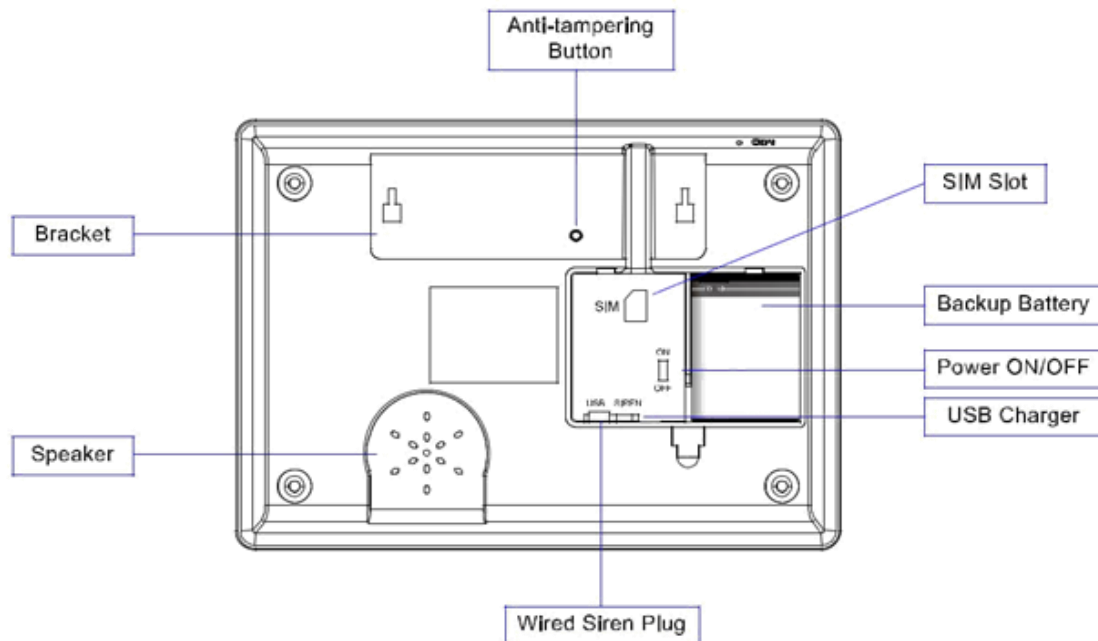
Product Features	3	Automatic Network	23
Alarm Host Diagram	4~5	Manual Network	25
Daily Operation	6	User Permission Sharing.....	27
Alarm Phone Call	8	Remote Controller	29
Control the host through Phone Call.....	9	Detector	30
Make Phone Calls Through Host	10	Phone Number	31
System Setting	11	Date/Time	32
Remote Controller	11~12	GSM Alarm	32
Detector	12	Host Phone Number	32
Alarm Phone	14	Detector Installation	33
Address Voice Record	15	Maintenance	35
Time	16	Technical Parameters	36
System Setting	19	Factory Default Zone Type	37
App Setting	21	Common Faults	38
User Registration	22		

Product Feature:

- 2.4 inch TFT Screen Display.
- Simple and Fashionable design, Pure White Case Matching to adverse decorations.
- WIFI & GSM Network, Easy for installing in minutes.
- APP / Remote Controller / Panel Keypad for Easy Control.
- Support 8 wireless remote controller, 45 wireless defense zones.
- 10 seconds Voice Record.
- Support 6 Phone numbers and 3 SMS numbers.
- Support 2 Groups of Scheduled Arm / Disarm / Home Arm.
- Elderly Defense Zone for periodical motion detecting.
- Bilingual Switch (Language Customized)
- Built-in Wireless Transmitter, Support Wireless Siren and other wireless devices (433Mhz RF Customized)

Alarm Host Diagram

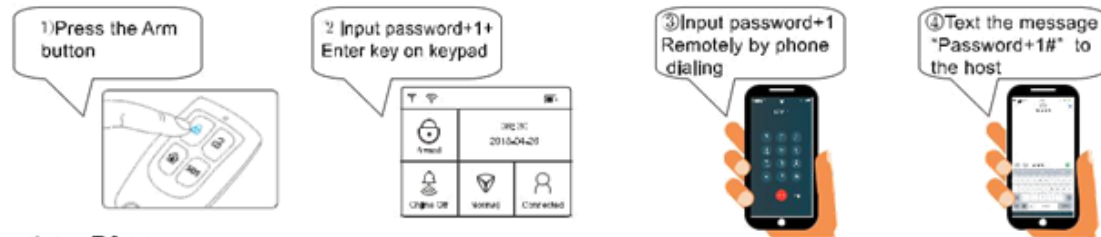
Back Side



Daily Operation

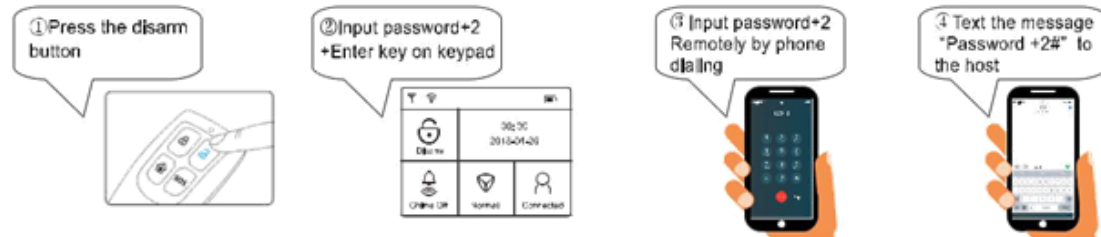
1. System Arm

In the status of arm, the ARM indicate light will keep being on. The voice will prompt "system arm" when you arm the system. If there is intruder, it will start to alarm. There are four methods to arm:



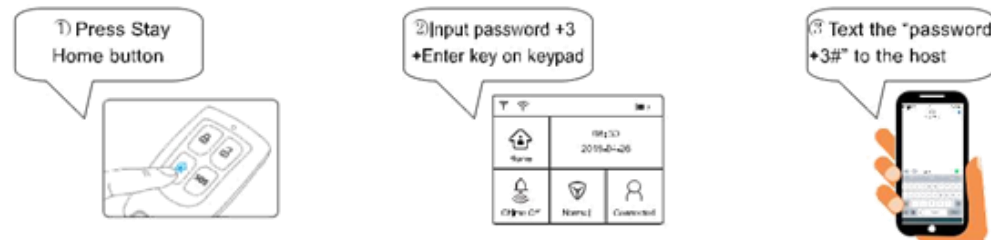
2. System Disarm

In the status of disarm, the host screen will show the "unlock" icon. The voice will prompt "system disarm" when you disarm the system. There are four methods to disarm:



3. Stay Mode

In the status of stay mode, the host screen will show the "stay mode" icon. the voice will prompt "stay mode" . If their is intruder, it will start to alarm. There are four methods to start home arm:



4 . SOS

In emergency, press the SOS button on the remote controller, the system host will start to alarm and call the preset phone numbers automatically for help. There are two ways to start the SOS Emergency:



Alarm Phone Call

The host will call the preset phone numbers in sequence if alarm occurs. The record of the alarm information will be played automatically when the users receive the alarm phone call. At the same time, the user can control the alarm host remotely by operating on the keypad of the mobile phone:

Press 【1】 : to stop the alarming, and arm the system again; the host will not make alarm phone call any more.

Press 【2】 : to stop the alarming, and disarm the system; the host will not make alarm phone call any more.

Press 【3】 : to stop the alarming, and monitor the alarm scene for **30** seconds. Press **3** again to monitor for another **30s**.

Press 【4】 : to stop the alarming, and intercom for **30** seconds. Press **4** again to intercom for another **30s**.

Press 【8】 : to make the siren beep

Press 【9】 : to close the siren alarming.

Press 【*】 : to listen the alarming info again

Press 【##】 :Hang off the phone.

Notice: If the user only hears the alarm voice, and then hand off the phone without any operation remotely, the host will continue to make phone calls to the next preset phone numbers until someone receives the alarming call and operate the host as above. If no one answers the alarming call, the host will call all the preset phone numbers circularly for three times.

Control the host through Phone Call

Call the phone numbers of the alarm host, the voice will prompt "please input password" after the host receives the phone call. The voice prompts "please input instruction" after the users input the right password. (The default password is 1234. Please use the new password user has changed it.)

Press 【1】 : to arm the system;

Press 【2】 : to disarm the system;

Press 【3】 : to monitor the alarm scene for **30** seconds, and press **3** again to monitor for another **30** seconds;

Press 【4】 : to intercom for **30** seconds. Press **4** again to intercom for another **30s**.

Press 【8】 : to make the siren beep.

Press 【2】 : to shut off the siren, and disarm.

Press 【##】 :Hang off the phone.

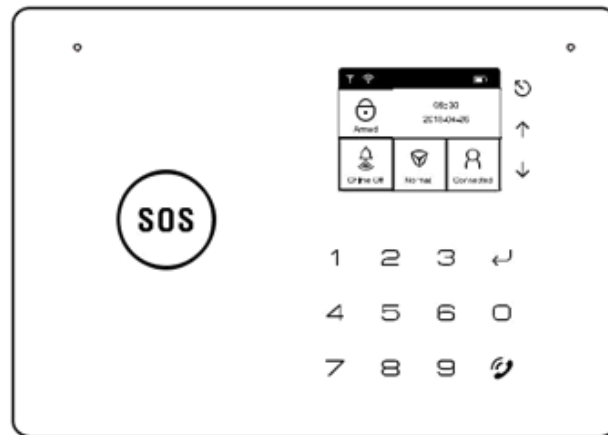
In GSM mode,you can't enter the password remotely.



1: If the GSM signal is not stable, then check the signal icon about 10 minutes, if signal icon show that the signal is always changing,then we suggest you can put the panel to another place to install.

2: Try to call your mobile when the GSM signal is full, but you find out that the signal is getting weaker and weaker,this indicate that the panel locaiton and GSM network is not good enough. We suggst you change another SIM card for your mobile or panel.

3: When calling your mobile via panel keypad, after you answer it, if the voice is not clear enough or no voice,then we suggest you change your SIM card to try again.

Make Phone Call Through Host



Operation: Input *phone number+  on the key board, the host will dial out immediately. For example, if you want to call the number 13811111111, enter ""*13811111111# "directly on the keyboard. And Press  .

System Setting

- ★ All the setting should be operated in the status of DISARM.
- ★ All the settings could be operated after inputting the correct password . The factory default password is **1234**, if User changed the password, please use the new password.
- ★ Open the Doorbell by inputting "**12344**", and press "↵", the door bell will chime.
- ★ Restore the factory default password, input "**95175308246**", and press "↵". then host will reset into the original password.
- ★ Check IMEI number, input "1" on host keypad, press "↵". you will see the right IMEI code of the host.
- ★ Press "⏪" to exit the setup status.
(Attention: "↵" is "Enter" key; "⏪" is "Exit" key)

Remote controller

1.1 Add remote controller

When the host is in Disarm status, input the password (default 1234), press "↵" into the menu interface, The first icon is "Remote controller", it support to add 8 pcs at maximum, Enter into any option like 1, you will see "Add" "Edit" "Delete", Select "Add", and press "↵" to start pairing the remote controller, Press any key of remote controller, and again press "↵" to save it, Finally it will show "Save Successfully".

1.2 Edit remote controller

After pairing the remote controller, Choose "Edit", and press "↵", you will see the three edit setting. "Delay Arm" "Siren Switch" and "Arm/Disarm Beep", each setting can be switched ON or OFF.

● Delay Arm

Delay Arm means the host will have delaying time after being set into Arm Status. After you turn on "Delay Arm", and exit the programming status, press "Arm" key on the remote control, the host will beeps for seconds (Default delaying time 60 seconds), and then it will make a voice prompt "System Armed" after 60 seconds delaying.

● Siren Switch

Siren switch is the ON/OFF setting of mini wired siren. When you turn off the siren setting. The wired siren will not make any beep any more no matter when the sensor is triggered or you press the SOS key on the remote control.

● Arm/Disarm beep

Arm / Disarm Beep means the siren will beep when you control the host into Arm or Disarm Status. When you turn on the Arm / Disarm beep setting, each time you press Arm / Disarm key on the remote control, the siren will beep.

1.3 Delete Remote controller

After pairing the remote controller, Choose "Delete", and press "↵", Screen will prompt "Delete successfully"

2. Detector

The second icon of the menu interface is "Wireless Detector", our this model support 45 wireless detectors at maximum.

2.1. Add Detector

When you enter into the "Detector", there are 45 options, you can choose any option like 01, and press "↵", you will see "Add" "Edit" "Delete", Select "Add", and press "↵" to start pairing the Wireless Detector. Open the switch of the pairing detector, and again press "↵" to save it, Finally it will show "Save Successfully".

2.2 Edit Detector

After pairing the wireless detector, Choose "Edit", and press "↵", you will see the four edit setting, "Type", "Place", "Delay Alarm" and "Siren Switch", each setting can be switched into different feature.

● Zone Type

Type means defense Zone Type, continue to press "↵" and switch into different zone type (Default Type : Arm Effective), 1. Arm Effective, 2. Arm/Home Effective, 3. 24 Effective hours, 4. Bypass. 5. Doorbell, 6. Elderly zone, 7. Welcome zone.

For example: if you need to make the alarm system be in 24 hrs protecting status, constantly press two times "↵" to switch into "24 Effective hours", after exiting programming status, trigger the detector will make alarm immediately.

● Place

Place means defense zone location. continue to press "↵" and switch into different zone location (Default Type : SOS), 1. SOS, 2. Fire, 3. Gas, 4. Door, 5. Hall, 6. Window, 7. Balcony, 8. Boundary.

For example: if you need to make the 01 defense zone be in the location of Gas tanker, constantly press two times "↵" to switch into "Gas", after exiting programming status, once the detector is triggered, the user's phone will receive the phone dialing and SMS alarm like "01 zone Gas alarm".

● Delay Alarm

Delay alarm in "Detector" is the time delaying (Default delaying time: 60s), when the detector is triggered, the host will delay 60 seconds to make auto-dialing and send SMS to user's phone. (Notice: Delay alarm is applied to zone type of Arm Effective and Arm/Home Effective)

● Siren Switch

Siren switch is the ON/OFF setting of mini wired siren. The factory default siren setting is closed, when you open the siren switch, the siren will not alarm even if the sensor is triggered.

2.3 Delete Detector

After pairing the Wireless detector, Choose "Delete", and press "↵", Screen will prompt "Delete successfully"

3. Alarm Phone Call

The Third icon of the menu interface is "Phone", our this model support 6 phone alarm and 3 SMS alarm at maximum.

3.1 Add Phone Alarm Number.

When you enter into the "Phone", there are 6 phone number options, you can choose any option like Phone 01, and press "↵", you will see "Add", "Delete", Select "Add", and press "↵" to start record alarm phone number.

For example: input 13800001111, press "↵", Screen will prompt "Save successfully", Press the button of "SOS" on the host, the host will make auto-dial to user's phone (Attention: GSM Alarm Switch must be open)

3.2 Delete Phone Alarm Number.

After recording the alarm phone number, Choose "Delete", and press "↵", Screen will prompt "Delete successfully"

3.3 Add SMS Alarm Number.

When you enter into the "Phone", there are 3 SMS number options, you can choose any option like 07 SMS, and press "↵", you will see "Add", "Delete", Select "Add", and press "↵" to start record alarm phone number.

For example: Input 13800001111, press "↵", Screen will prompt "Save successfully", Press the button of "SOS" on the host, the host will Send SMS to user's phone (Attention: GSM Alarm Switch must be open)

3.4 Delete the SMS Alarm Number

After recording the SMS number, Choose "Delete", and press "↵", Screen will prompt "Delete successfully"

4. Address Voice Record

The Fourth icon of the menu interface is "Address", it is for the voice warning of alarm address.

4.1 Voice Record

When you enter into the "Address", you will see the 3 setting. "Recording", "Play", "Delete". select "Recording", it support 10 seconds human voice recording. When the sensor is triggered, the user will receive the phone dialing, and he will hear the voice recording.

4.2 Play

After you complete the voice recording, you can play back the recorded voice to check the effect.

4.3 Delete

After complete the 10 seconds voice recording, Choose "Delete", and press "↵", Screen will prompt "Delete successfully"

5. Time

5.1 System Setting

● Automatic

The time is automatically set when the host connects the local wifi network. It will acquire the local time zone where the system is used. (Attention: time is set only when connecting wifi network, if it fails, please set the time manually.)

● Manual

If you choose to set time manually, "YY" is year, "MM" is month, "DD" is day, "HH" is hour, "MM" is minute, "SS" is Second. Year+Month+Day+Hour+Minute+Second.

Fore example: we set the host time being 9:20a.m., 24th,May, 2018. Input 1805240920.

● Date Format

There are 2 options for time displaying. "YY / MM / DD" is Year, Month, Day. "DD / MM / YY" is Day, Month, Year.

5.2 Schedule Arm

Schedule Arm means user can set the alarm host in Arm status at a scheduled time.It supports to set 2 groups of schedule Arm, input the Hour+Minute and press "↵" and save successfully.

For Example: if you want to set the alarm host automatically being Armed at 8:30a.m. input 0830 and press "↵", the host schedule arm time is 08:30a.m.

Notice: To Close schedule arm setting (it is only handled on the host), set the schedule time at 24:24, press "↵" to save successfully, then the schedule arm time will be close down.

5.3 Schedule Disarm

Schedule Disarm means user can set the alarm host in Disarm status at a scheduled time. It supports to set 2 groups of schedule Disarm, input the Hour+Minute and press " ← " and save successfully.

For Example: if you want to set the alarm host automatically being Disarmed at 12:30p.m. input 1230 and press " ← ", the host schedule Disarm time is 12:30p.m.

Notice: To Close schedule Disarm setting (it is only handled on the host), set the schedule time at 24:24, press " ← " to save successfully, then the schedule Disarm time will be close down.

5.4 Schedule Home arm

Schedule Home arm means user can set the alarm host in Disarm status at a scheduled time. It supports to set 2 groups of schedule Disarm, input the Hour+Minute and press " ← " and save successfully.

For Example: if you want to set the alarm host automatically being home armed at 17:30p.m. input 1730 and press " ← ", the host schedule home arm time is 12:30p.m.

Notice: To Close schedule home arm setting (it is only handled on the host), set the schedule time at 24:24, press " ← " to save successfully, then the schedule home arm time will be close down.

5.5 Beep Time

Beeping time means the alarm time of wired/wireless siren. The alarm beeping time can be 1-180 seconds (Default beeping time is 180 second).

For example: if you set the beeping time at 10 seconds, input 10 and press " ← ", save successfully, when the host receives the triggered alarm signal from the sensor, the siren will start alarm, and it will last for 10 seconds, then stop.

Notice: the beeping time setting is both useful to wired siren and wireless siren.

5.6 Arm Delay

Arm Delay means the delay time of host getting into arm status. The delaying time can be 1-180 seconds (Default delaying time is 180 second).

For example: if you set the arm delaying time at 5 seconds, input 05 and press " ← ", save successfully, then exit the programming status. Input 12341 and press " ← ", the host will delay 5 seconds and get into Arm status.

5.7 Alarm Delay

Alarm Delay means the delay time of host making alarm. The alarm delaying time can be 1-180 seconds (Default delaying time is 180 second).

For example: if you set the alarm delaying time at 10 seconds, input 10 and press " ← ", save successfully, when the host is in Arm status, once the sensor is triggered, the host will delay 10 seconds, then automatically make auto-dial and send SMS to phone (App will have prompt).

5.8 Elderly Zone

Elderly zone is the special defense zone for elderly, the zone triggered time is 1-48 hours. It means the host will make alarm if there is no elderly triggering the sensor in regular time.

For example: if you set the Elderly zone triggered time at 2 hours, input 2 and press " ← ", save successfully, then change the selected paired detector zone type into Elderly Zone, when the host is in Arm status, once the sensor is not triggered within 2 hours, the host will automatically make auto-dial and send SMS to user's phone.

6. System Setting

6.1 WiFi Setting

- **Automatic Network**

Choose "Automatic Network" and press "↵" to make wifi setting, then open the Mobile phone App, click "+" on the upper right corner, input the wifi password, instructing as the prompts. Network will be made automatically in 60 seconds.

- **Manual Network**

Choose "Manual Network" and press "↵" to make wifi setting, then open the Mobile phone app, click "+" on the upper right corner, instructing as the prompts. Operation Method:

6.2 Function Switch

- **Power SMS**

Power SMS is the ON/OFF setting of SMS notification when the power is lost (Default Setting is OFF). when you turn on the Power SMS setting, once the power is cut off, the host will send notifying text message to the user no matter it is in Arm or Disarm status.

- **Arm / Disarm SMS**

Arm / Disarm SMS is the ON / OFF setting of SMS notification when the host gets to Arm or Disarm status (Default Setting is OFF). when you turn on the Arm/Disarm SMS setting, Press the Arm/Disarm key on the remote controller, the host will send text message to the user. Press same key for over 2 times will not receive more notifying SMS, turn to pressing another key will work.

- **Low Battery SMS**

Low Battery SMS is the ON/OFF setting of SMS notification when the sensors becomes in low power (Default Setting is OFF). when you turn on the Low Battery SMS setting, if the sensor is in low power, it will transmit the alarm signal to host (also Alarm Host must be in Arm Status), host will send notifying message to the user's phone.

(**Attention:** it must be on the condition that GSM Alarm Switch is open)

- **Wireless Switch**

Wireless switch is for connecting the wireless device like wireless siren, wireless smart socket, wireless light bulb,etc. Usually we offer to connect wireless siren.

make the wireless siren setting be ON status, after turning on the wireless siren, press the "set" key, the wireless siren enters into pairing status. Then input 12342 on the host, after the wireless siren receives the signal, it will beeps and the pairing is successful. Continually press "set" key for 5 time to exit the pairing.

- **GSM Alarm**

GSM Alarm is for Gsm network setting. Only when the GSM Alarm is switched on, the host can make phone dialing and send SMS (Default setting is Closed), when the wifi network is successfully connected, once wifi network is lost, the system will automatically switch into GSM network Setting.

6.3 Factory Reset

The setting of restoring factory default status.

6.4 Password

If you need to change a new password, input four digit number to revise a new one. press "↵" to save it successfully.

6.5 Volume

it is the Volume setting from 0-100db,

6.6 Language

It is the switch setting between English and Chinese (Other language is Customized)

7 . App Setting

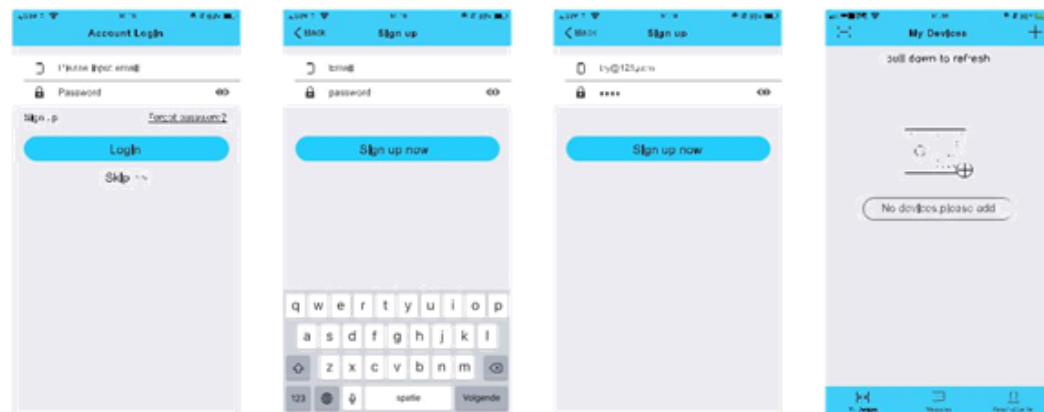
Attention:

✘ When the mobile phone can't find the wifi network, and the phone has GPRS Service, the host will automatically select the GSM network. You can log in the account by Email and password to register and add gsm host, (the account can not be log in without wifi or GPRS)

✘ When the mobile phone connects the wifi network, enter into host app by register a account. Add the wifi alarm host by automatic network or manual network. (Take Reference to 7.2 Automatic Network or 7.3 Manual Network)

7.1 User Registration

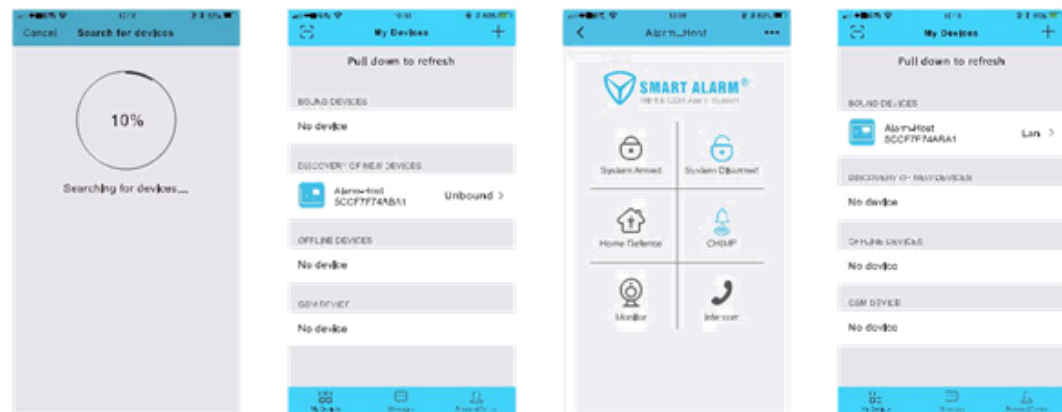
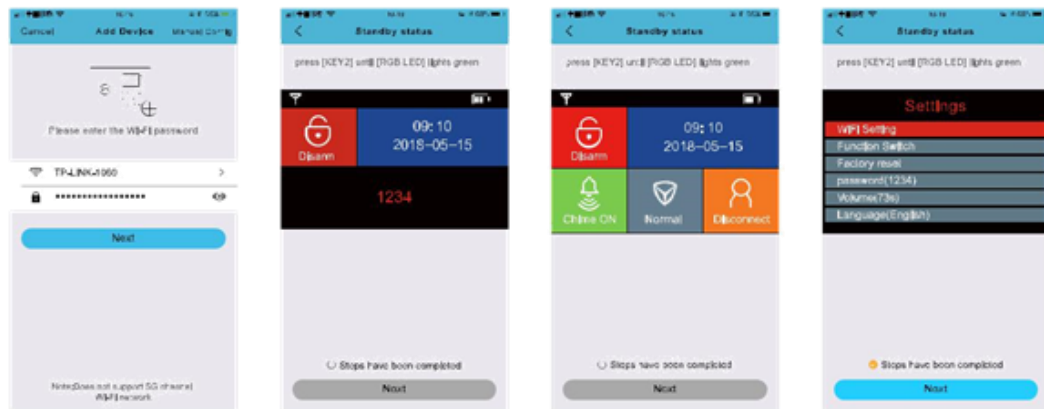
Download the APP "G66W" from the app store, Register an account by email address and user-defined password.



7.2 Automatic Network

In the interface of "My Device", click "+" on the upper right corner, then you will enter into the device adding.

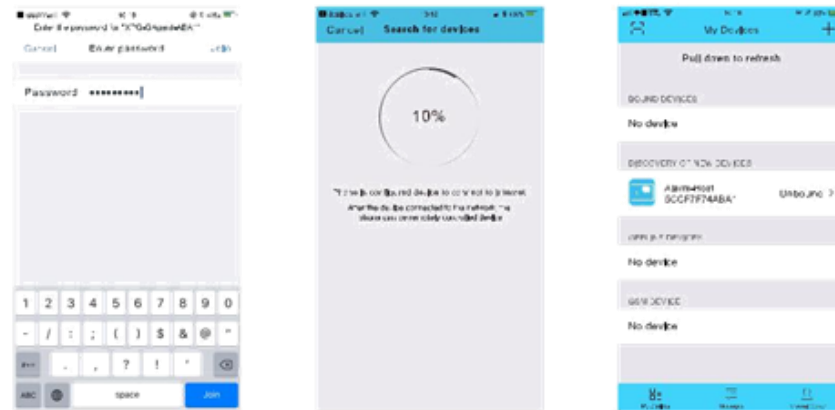
1. Mobile phone needs to connect the wifi, wifi name will be obtained automatically, you just input the right wifi password.
2. Choose the "Automatic Network" in the Wifi Setting of the host (the app will instructs you), turn it on.
3. Then wait several seconds (Within 60 seconds), the APP will connect the alarm host automatically. Finally it will show that Connect successfully.



7.3 Manual Network

In the interface of "My Device", click "+" on the upper right corner, then choose to click "Manual Set".

1. do as the text instructs, click "go to connect host wifi", select "XPG-GAgent-644B" (The last four numbers is host ID), Input the factory default password 123456789 (unchangeable)
3. Choose the "Manual Network" in the Wifi Setting of the host (the app will instructs you), turn it on.
4. Then wait several seconds (Within 60 seconds), the app will connect the alarm host automatically. Finally it will show that connect successfully.

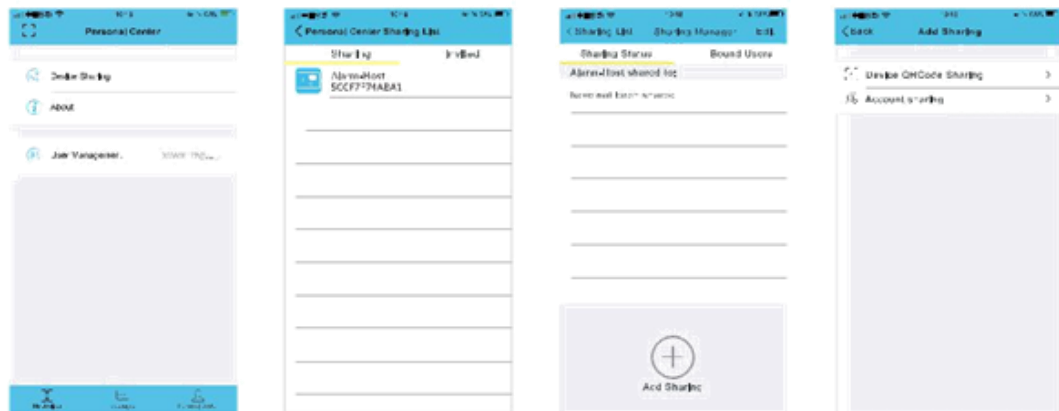


7.4 Share Using Permission

In the interface of "My Device", click "Personal Center" to select "Host Sharing", then you will see your using host ID, enter it and click the "Add Sharing". you will see two options "Host QR Code Sharing" and "User Account Sharing".

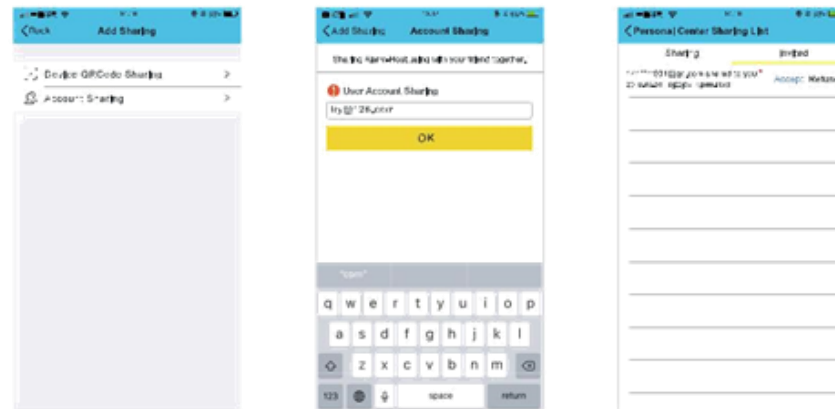
※ QR Code Sharing

When you select "Host QR Code Sharing", you can share the auto generated QR Code to your friend or family, they can acquire the using permission of alarm system through scanning such a QR code (each auto generated QR code is valid within 15 minutes)



※ User Account Sharing

When you select "User Account Sharing", input your friend or family's registered account number (the Account may be email address or phone number by registering our "G66W" APP) and confirm it, your friend or family open the APP and enter into the "Personal Center", and select the "Host Sharing", check the "Invitation" to see the notifying message.



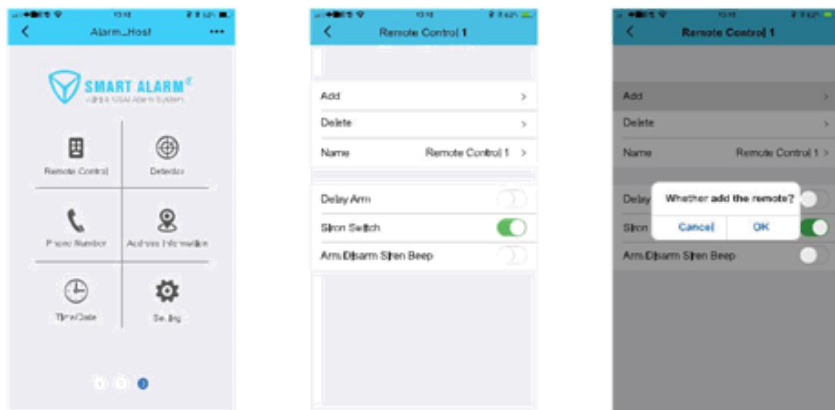
※ Scan Sharing

When your friend or family download the "G66W" APP, they click the icon "📄" to scan the QR Code The Primary User have shared, then starting accept the host permission invitation (the auto generated QR code is valid within 15 minutes).

7.5 Remote Controller

※ Add, Delete and Edit Remote controller

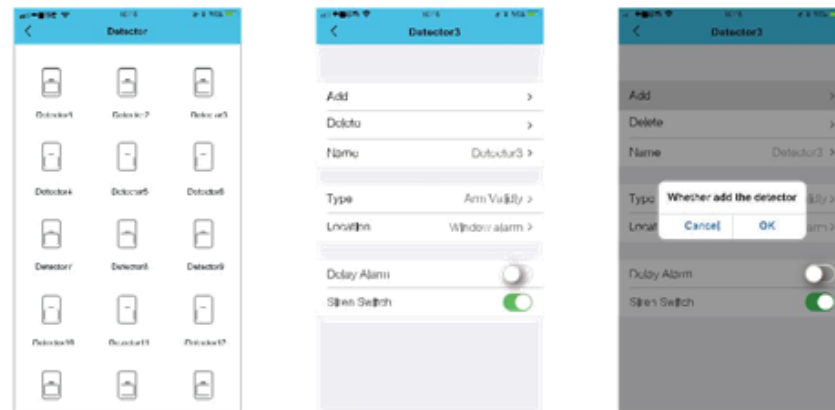
In the interface of "My Device", click the "Alarm_Host" into the function list, slide right to the third interface, Select the "Remote Controller" icon, it supports to add max 8 pcs, choose one to add or delete, name editing, etc. When you add the remote controller successfully, the icon "Remote Controller" which is added will become blue (the not added ones are gray).



7.6 Detector

※ Add, Delete and Edit Detector

In the interface of "My Device", click the "Alarm_Host" into the function list, slide right to the third interface, Select the "Detector" icon, it supports to add max 45 pcs, choose one to add or delete, name editing, etc. When you add the detector successfully, the icon "Detector" which is added will become blue (the not added ones are gray).



※ Zone Type

Inside the setting of adding detector, the adding detector can be set in different zone types.

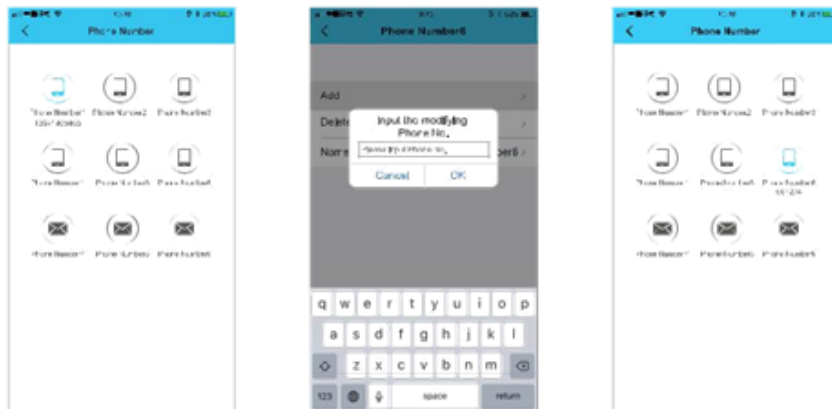
※ Zone Location

Inside the setting of adding detector, the adding detector can be set in different zone location.

7.7 Telephone Number

※ Add, Delete and Edit Telephone Number

In the interface of "My Device", click the "Alarm_Host" into the function list, slide right to the third interface, Select the "Telephone" icon, it supports to add max 6 pcs alarm phone-dialing number and 3 pcs alarm SMS number, choose one to add or delete, and name editing, etc. When you add the phone number successfully, the icon "Telephone" which is added will become blue (the not added ones are gray).



7.8 Date/Time

In the interface of "My Device", click the "Alarm_Host" into the function list, slide right to the third interface, Select the "Time/Date" icon and enter it.

※ System Time

Two Handling Options "Automatic/Manual", you can choose to set the time by automatic network obtaining, or manual time setting (Default Setting is Automatic Time Obtaining). Then you can also change the date format, "Year / Month / Day" or "Day / Month / Year".

※ Schedule Arm / Disarm / Home Arm, each type support 2 groups of time setting.

※ Siren beep time (0-180s), Delay Arm (0-180s), Alarm Delay (0-180s), Elderly Zone (0-48hrs)

7.9 GSM Alarm

In the interface of "My Device", click the "Alarm_Host" into the function list, slide right to the third interface, Select the "System Setting" icon and enter it.

GSM Alarm is for Gsm network setting. Only when the GSM Alarm is switched on, the host can make phone dialing and send SMS (Default setting is Closed). when the wifi network is successfully connected, once wifi network is lost, the system will automatically switch into GSM network Setting.

7.10 Host Phone Number

In the interface of "My Device", click the "Alarm_Host" into the function list, slide right to the third interface, Select the "System Setting" icon and enter it. Then Select "Phone number" (The number is the phone number of Alarm host), input the right host phone number, then you can slide left to the first interface, select "Intercom" to directly make phone dialing to the host.

8. Detector Installation

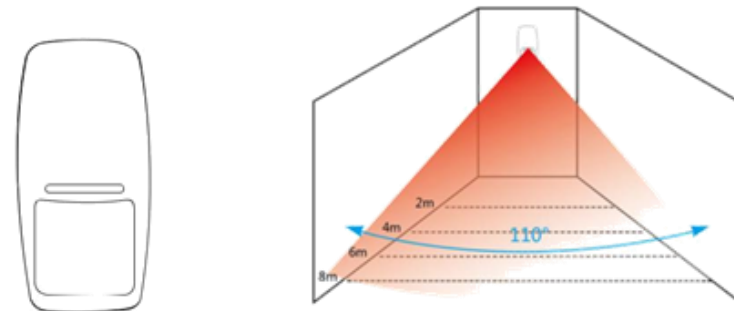
8.1 The Installation Diagram of Magnetic Door Detector:



Cautions:

- ① The gap between the magnet and the sensor should be less than 10mm.
- ② After the installation, if the indicate light of the detector is on when the door is opened, it proves it is installed successfully
- ③ If the indicate light of the door detector flashes when it is triggered, it means the battery of the sensor is in low voltage, and you need to change the battery as soon as possible.
- ④ The transmit distance of the detectors is less than 80meters in the open area. Please test the distance before installing. The obstacles will change the transmitting distance.

8.2 The Installing Diagram of PIR Motion Detector:



To avoid the false alarm, please pay attention to the following points in stalling the PIR motion detector:

- ① Do not face the glass door / window.
- ② Do not face the big object which is easy to swing.
- ③ Do not face the cold and heat air vent or cold and heat source.
- ④ The furniture, miniascape, or any other isolations should be away from the detecting scope.
- ⑤ Do not install 2 or more detectors in the same area or it will cause the interference when alarm.
- ⑥ When the detector is triggered and the LED indicator flashes, it means the battery is in low voltage, please change it as soon as possible.
- ⑦ The detecting distance is less than 8meters, the transmitting distance is less than 80meters. Please test the distance after installing. The obstacles will influence the distance.

9. Maintenance

9.1 System Inspection

The system need the periodic inspection to ensure the stable and safe work. We suggest the users inspect the system per three months and inspect the detectors per month.

Alarm Host Inspection:

- 9.11 Check whether the host can arm or disarm normally.
- 9.12 Check whether the host can call through the phone numbers when alarm occurs.
- 9.13 Check whether the host can receive the signals from detectors normally and the back-up battery work normally or not.

Detector Inspection:

- 9.14 Trigger the detector by hand to check whether it can send the alarm signal successfully.
- 9.15 Check the battery of each detector to see whether it is short of voltage.

9.2 Cautions

- 9.21 Do not disassemble, repair, transform the product privately, or it will cause fault or accident.
- 9.22 Do not fall the product on the hard ground to avoid the fault or damage because of the strong crash.
- 9.23 Do not set "911" or any other security departments' telephone numbers as the alarming phone numbers without any authorization.

10. Technical Parameters

- Power Input: DC 5V / 2A;
- Standby current: $\leq 150\text{mA}$;
- Alarming current : $\leq 350\text{mA}$;
- WiFi Standard: 802.11 b/g/n
- Backup Battery: 4.2V 300mAH rechargeable Lithium battery.
- Full charged time: 10 hours. Standby time: 6 hours;
- Wired Siren volume: 120DB (The default beep time is 180s when alarm);
- Alarm Host RF receiving frequency: 433MHz ($\pm 75\text{KHz}$) ,PT2262 / 4.7M Ω EV1527/300K (Customized for 315Mhz);
- Alarm Host RF transmitting frequency: 315MHz ($\pm 75\text{KHz}$) ,PT2262 / 4.7M Ω EV1527/300K; (Customized for 433Mhz)
- Supported alarming telephone numbers: 6 alarm phone numbers,3 SMS numbers;
- Supported accessories: 8 remote controllers, 45 wireless detectors;
- Distance between accessories and alarm Host: remote controllers <40 meters(In the open distance) , detectors<80 meters(In the open distance);
- Factory default password: 1234
- Working temperature: -10 C. ~+50 C.

11. Factory Default Zone Type

Defense Zone	ARM	HOME ARM	STYPE	ALARM	Siren
Zone 1	Valid	Invalid	Immediate	SOS Alarm	ON
Zone 2	Valid	Invalid	Immediate	Hall Alarm	ON
Zone 3	Valid	Invalid	Immediate	Window Alarm	ON
Zone 4	Valid	Invalid	Immediate	Balcony Alarm	ON
Zone 5	Valid	Invalid	Immediate	Fire Alarm	ON
Zone 6	Valid	Invalid	Immediate	Gas Alarm	ON
Zone 7-45	Valid	Invalid	Immediate	SOS Alarm	ON
Zone 46	SOS Key on Host	Zone 47	Anti-tempering		
Default Password	1234	Distant Control:	GSM Network		
Siren Beep	180 Seconds	Siren Prompt:	OFF		

12. Common Faults

Faults	Analysis
The host can't connect wifi network	<ul style="list-style-type: none"> Do not make Host far from Router Router Should be 2.4G RF Band Whether Local ISP Limits the number of internet terminals?
The host doesn't react when making App setting.	<ul style="list-style-type: none"> Make sure both the host and phone are in good network .
The host doesn't make phone call when alarming	<ul style="list-style-type: none"> Whether host is in Arm status? Whether Set the wrong alarming telephone number? Whether Set the alarm delay? Whether Telephone bill is overdue?
Disable to find the network	<ul style="list-style-type: none"> Whether SIM is not GSM card? Do not set the PIN code on SIM. The Host is in low power?
Insensitive Distant Control	<ul style="list-style-type: none"> The GSM network is weak. Suggest changing a new SIM card.
Disable to distant control	<ul style="list-style-type: none"> Input the Wrong password?
The host can't receive the signal from accessories	<ul style="list-style-type: none"> The pairing is not successful The accessory is defective
No Alarm delay after setting the Alarm delay	<ul style="list-style-type: none"> Whether Zone is not programmed to alarm delay?
No SMS notification When Power is off	<ul style="list-style-type: none"> Whether host is in the status of ARM when the power is off?
Siren doesn't beep	<ul style="list-style-type: none"> Whether The siren does not connect the power Whether Set the siren off when alarm?
Accessories can only work in short distance	<ul style="list-style-type: none"> Accessories is in low Power Alarm Host is in low Power or not connecting power charger? Whether these exists signal interference